

1. Activation of the zone anchor

Activation of the zone anchors is preferably done with clear skies, and not inside (e.g. factory or warehouse).
 Zone anchors are not activated when delivered to your premises.
 Their subscription in the platform will start within six month of purchase.

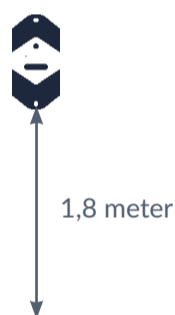


Hold a magnet for about 5 seconds on top of the logo on the zone anchor.

You will first see a **red LED**. Do not remove the magnet yet.

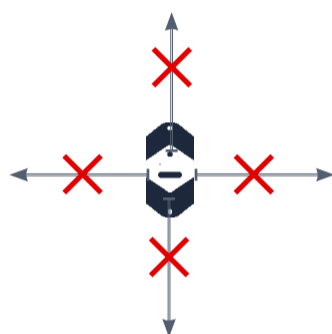
When the green LED is blinking you can remove the magnet.
 Your zone anchor is ready for use.

2. Installation of the ZA 3505



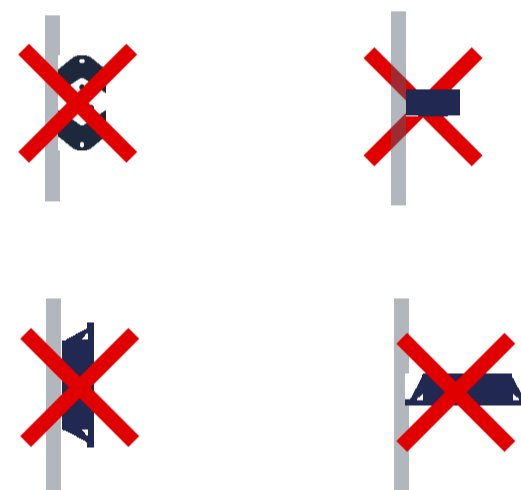
Height

Install the zone anchor as high as possible, minimum 1.8 meter above the ground.



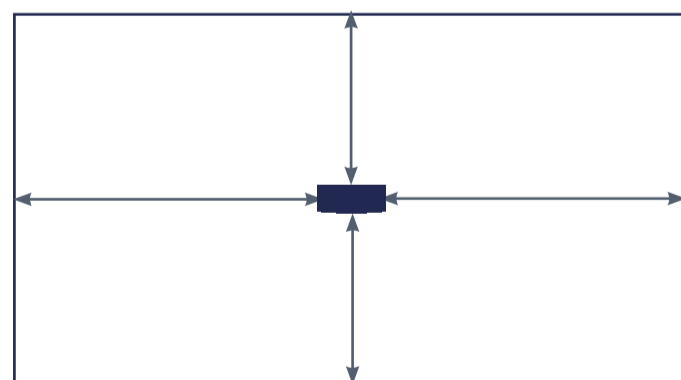
Position

Remember that a zone anchor is a fixed device that should always remain at the same location.



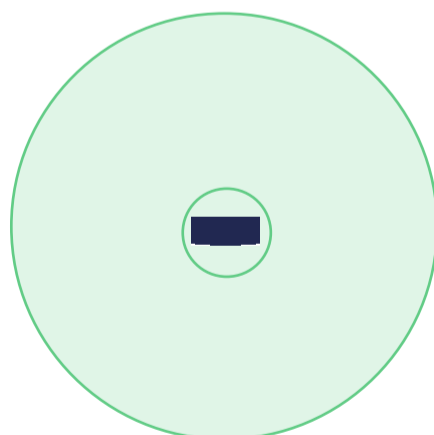
Orientation

Zone anchors are mounted vertically or horizontally and only with the back facing the mounting surface. All other installations are not recommended.



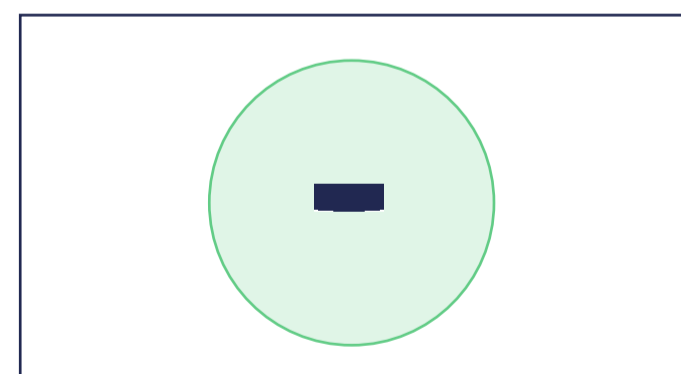
Location in area

Identify the area in which your assets need to be geolocated using a zone anchor and place it in the middle of that area.



Installation in open areas

The zone anchor will cover an open area between 2 meter and 20 meter radius.



Installation in rooms

One zone anchor per room. if the room exceeds 10 x 10 meter, please install 2 zone anchors

Mounting the zone anchor to the wall

[Guidelines how to mount](#) the zone anchor to the wall can be found in the Sensolus documentation center.

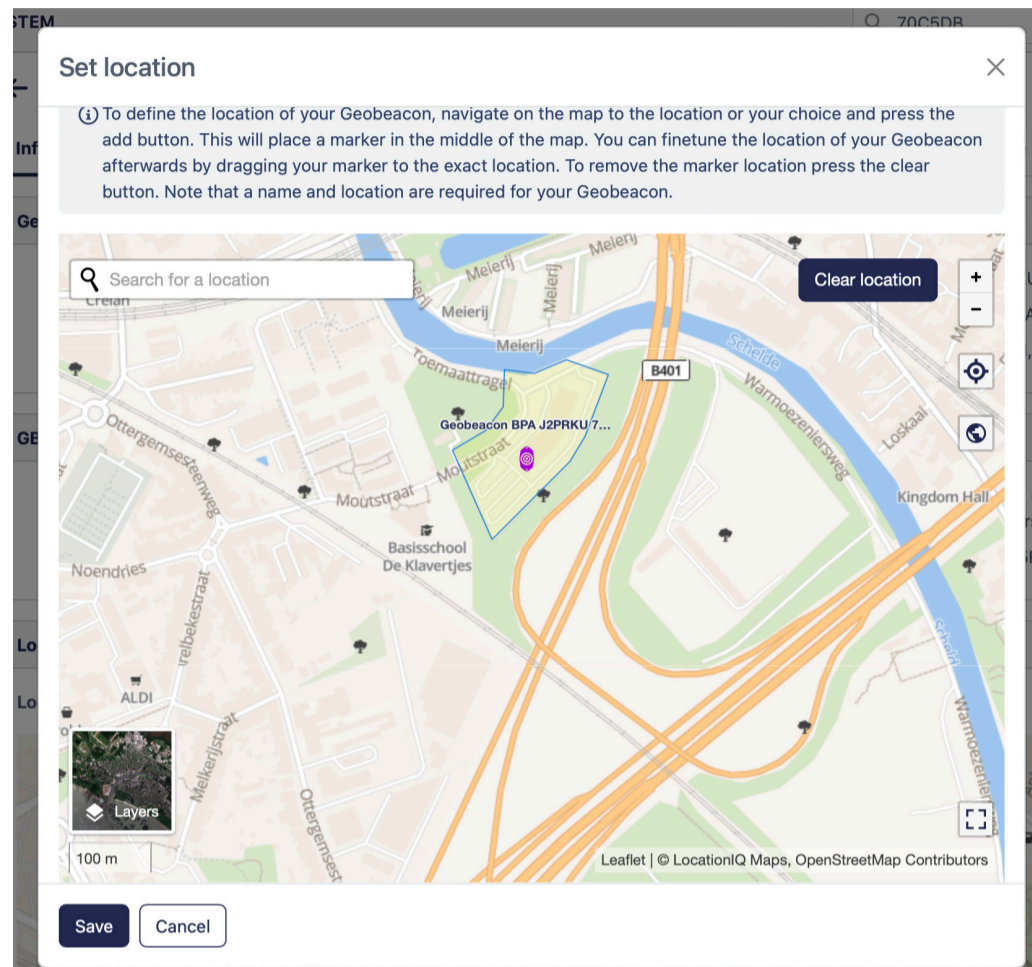
3. BLE signals and ZA 3505

Sensolus Geobeacons use BLE signals.

Water and metal surfaces reflect the Bluetooth signals.

Always test the devices in real life circumstances for optimal installation of the geobeacons.

4. Configure the ZA 3505 in the Sensolus platform



1. Login to the sensolus platform.
2. Go to **Admin =>Infrastructure**
3. Look up the device through the serial number (six characters).
4. Open the device details page.
5. Set the location on the map by clicking the button on map.

5. Force new configuration download on the tracker



6. Replace the batteries

You can use this [battery replacement manual](#) to replace the batteries for a ZA 3505.

Federal Communication Commission Interference Statement

This device complies with Part 15 of the FCC Rules. Operation is subject to the following two conditions: (1) This device may not cause harmful interference, and (2) this device must accept any interference received, including interference that may cause undesired operation.

This equipment has been tested and found to comply with the limits for a Class B digital device, pursuant to Part 15 of the FCC Rules. These limits are designed to provide reasonable protection against harmful interference in a residential installation. This equipment generates, uses and can radiate radio frequency energy and, if not installed and used in accordance with the instructions, may cause harmful interference to radio communications. However, there is no guarantee that interference will not occur in a particular installation. If this equipment does cause harmful interference to radio or television reception, which can be determined by turning the equipment off and on, the user is encouraged to try to correct the interference by one of the following measures:

- Reorient or relocate the receiving antenna.
- Increase the separation between the equipment and receiver.
- Connect the equipment into an outlet on a circuit different from that to which the receiver is connected.
- Consult the dealer or an experienced radio/TV technician for help.

FCC Caution: Any changes or modifications not expressly approved by the party responsible for compliance could void the user's authority to operate this equipment.

This transmitter must not be co-located or operating in conjunction with any other antenna or transmitter.

Radiation Exposure Statement:

This equipment complies with FCC radiation exposure limits set forth for an uncontrolled environment.
This equipment should be installed and operated with minimum distance 20cm between the radiator & your body.

This equipment is not suitable for use in locations where children are likely to be present