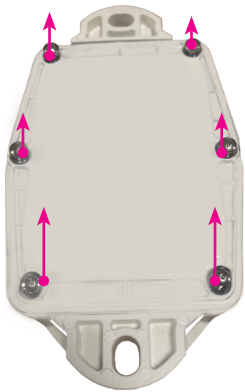


The TRACK 1101 and 1141 ship with a standard battery pack BAT 8206.

Please order these battery packs and replace with these battery packs. All info on the battery pack are on the [documentation center](#).



**Step 1**  
Make sure that the serial number and logo are facing the right way up. Then turn the tracker face down. Unscrew the 6 screws.  
Tip: If using a power drill, use power setting 7, on low. (Note: not all power drills have the same settings!)



**Step 2**  
Remove the back plate and the 6 screws.

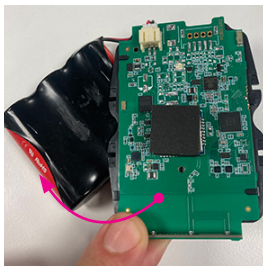


**Step 3**  
Take the module (Battery pack + battery holder + PCB) out of the casing.

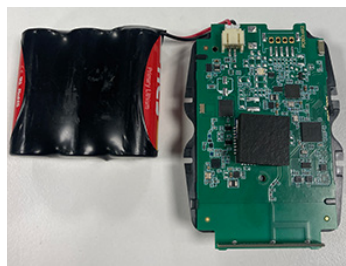
You might need to tilt the casing a bit



**Step 4**  
Turn around the module (Battery pack + battery holder + PCB) so the PCB is on top.



**Step 5**  
Lift the module and move the battery pack from the insert to the side.



**Step 6**  
Align the battery pack next to the PCB and insert.



**Step 7**  
Disconnect the battery pack from the PCB. Be careful in disconnecting the battery pack.



**Step 8**  
Connect the new the battery pack to the PCB. A green LED will flash for some seconds.



**Step 9**  
Move the battery pack back under the insert and PCB and flip the module.



**Step 10**  
Align the battery pack onto the insert.

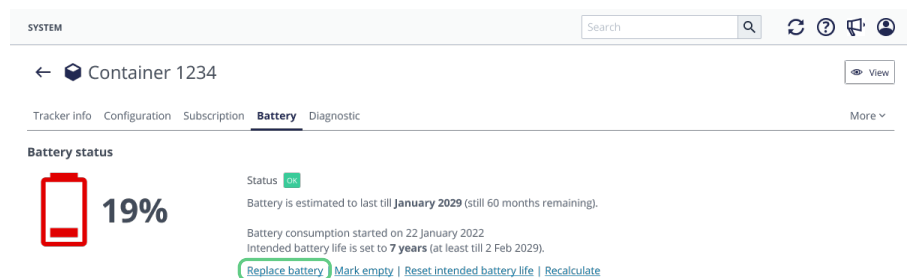


**Step 11**  
Place the module in the tracker. Use the alignment marks on the casing. Do not use force. There is only one way to put the module back in the tracker.



**Step 12**  
Close the tracker carefully. Your tracker is ready to use again.

## Indicate battery replaced in platform



When you replaced the battery in the tracker you have to indicate that in the platform.

- Go to the tracker details page in the general section. You can search for this tracker or find in in the asset list or asset map.
- Click on the settings button on the far right
- Go to the battery tab
- Click replace battery

